



2024-2025

**RIDEREVER**  
[www.riderever.com](http://www.riderever.com)



We believe increases in performance shouldn't be tied to greater complexity. Safety part as brakes, are most needed in the rough riding / sudden stop conditions. With the foundation of reliability and durability, RIDEREVER simplified the maintenance / repair sequence to save more time for an enjoying riding.

**06** Mountain Brake  
Arc series  
Attack-X series  
Attack series

**21** E-Bike Brake  
Arc-E  
Attack-XE  
Attack-E

**26** Cargo Bike Brake  
E-Cargo

**32** Road Bike Brake  
Attack (FM) series  
Arc (FM)  
Triva  
MCX-2

**39** Accessories

	CROSS COUNTRY	TRAIL	ALL MOUNTAIN	ENDURO	FREERIDE	E-MTB	ROAD	GRAVEL	CYCLO-CROSS	TOURING	URBAN	TIME-TRIAL TRIATHLON	Cargo
RACE			Attack-XR									Triva/Triva II	
SPORT	Arc-S		Attack-S		Attack-XS								
										Attack-S (FM)			
UNIVERSAL	Arc-U		Attack-U							Arc-U (FM)			
				Attack-XU									
										Attack-U (FM)			
OTHER						Attack-E							Cargo /Cargo-T
						Attack-XE							Cargo-X
						Arc-E							Cargo-Duo
							Mcx-2 FM/PM						

RACE

Outstanding performance with reduced weight and maximum stopping power in harsh terrain.

SPORT

Features improved adjustability with consistent power in all conditions.

UNIVERSAL

Suitable for all riders, these brakes offer high performance at an attractive price.





# Mountain Brake



## SERIES TECH

### FEATURES

Compact design with dual bladders for ambidextrous use and easy bleeding.  
Large 24mm pistons provide outstanding power and control while the high quality finish improves the appearance of any bike.

### SYSTEM

Open System

### FLUID

Mineral Oil



## EXCELLENT PERFORMANCE IN COMPAT DESIGN





# Arc Series

SPECIFICATIONS

MODELS	Arc-S	Arc-S+	Arc-U
MOUNT TYPE	Post Mount	Post Mount	Post Mount
LEVER MATERIAL	Forged Aluminium	Forged Aluminium	Forged Aluminium
LEVER BLADE	2 Finger Forged	2 Finger Forged	2 Finger Alloy Stamping
ADJUSTMENT	Tool-free	Toood	Tooled
PISTON	2	2	2
HOSE JOINT	Inline	inline	Inline
BRAKE HOSE COLOR	Black	Black	Black
LOADING DIRECTION	Top Loading	Top Loading	Top Loading
SYSTEM	Open System	Open System	Open System
PAD	sport semi-metallic	Semi-Metallic	Semi-Metallic
FLUID	Riderever Mineral	Riderever Mineral	Riderever Mineral
FINISH	Black	Black	Black
AVERAGE WEIGHT	225g	225g	230g

# sport / Arc-S

Outstanding power, control, and adjustability in all conditions.

LEVER:

- 2 Finger Forged Lever Blade
- Forged Lever body
- Tool-free Reach Adjust
- I-Spec II Compatible
- Finish:Anodise Black

CALIPER:

- 2-Pison Forged Alloy
- Sport semi-metallic brake pad (Compatible with Shimano G type)
- Finish: Anodise Black
- Weight: 225g



# sport / Arc-S+

Outstanding power, control, and adjustability in all conditions.

## LEVER:

- ▶ 2 Finger Forged Lever Blade
- ▶ Forged Lever body
- ▶ Tooled Reach Adjust
- ▶ I-Spec II Compatible
- ▶ Finish: Anodise Black

## CALIPER:

- ▶ 2-Pison Forged Alloy
- ▶ Semi-Metallic Brake Pad (Compatible with Shimano G type)
- ▶ Finish: Anodise Black
- ▶ Weight: 225g

# universal / Arc-U

Forged aluminum body and 2-finger lever blade is a great choice for all-around mountain braking.

## LEVER:

- ▶ 2 Finger Stamping Lever Blade
- ▶ Forged Lever body
- ▶ Tooled Reach Adjust
- ▶ I-Spec II Compatible
- ▶ Finish: Anodise Black

## CALIPER:

- ▶ 2-Piston Forged Alloy
- ▶ Semi-Metallic Brake Pad (Compatible with Shimano G type)
- ▶ Finish: Anodise Black
- ▶ Weight: 230g

# ATTACK

SERIES TECH

## FEATURES

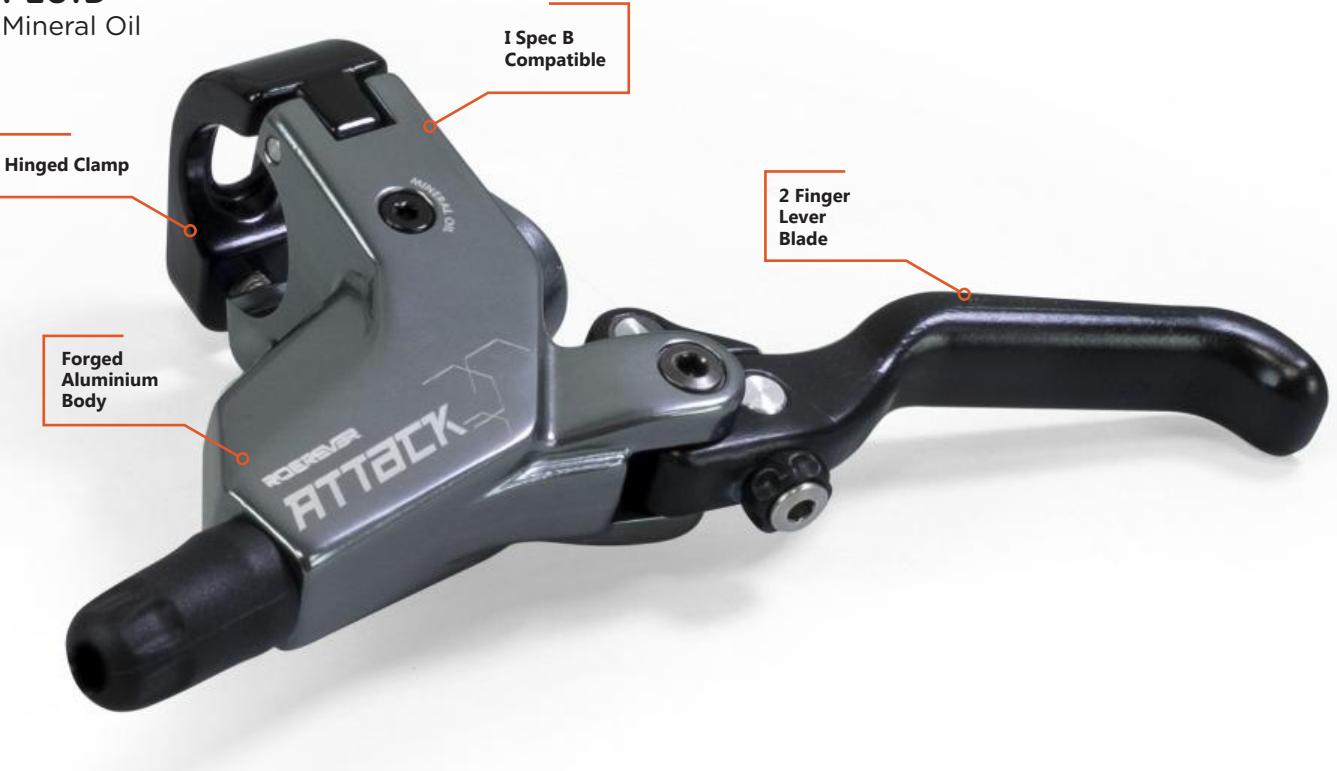
The muscular and modern lever design delivered simple, powerful stopping force for all types of riders and trails. The Hinged clamp and discrete design are easy to assemble install on the handlebar.

## SYSTEM

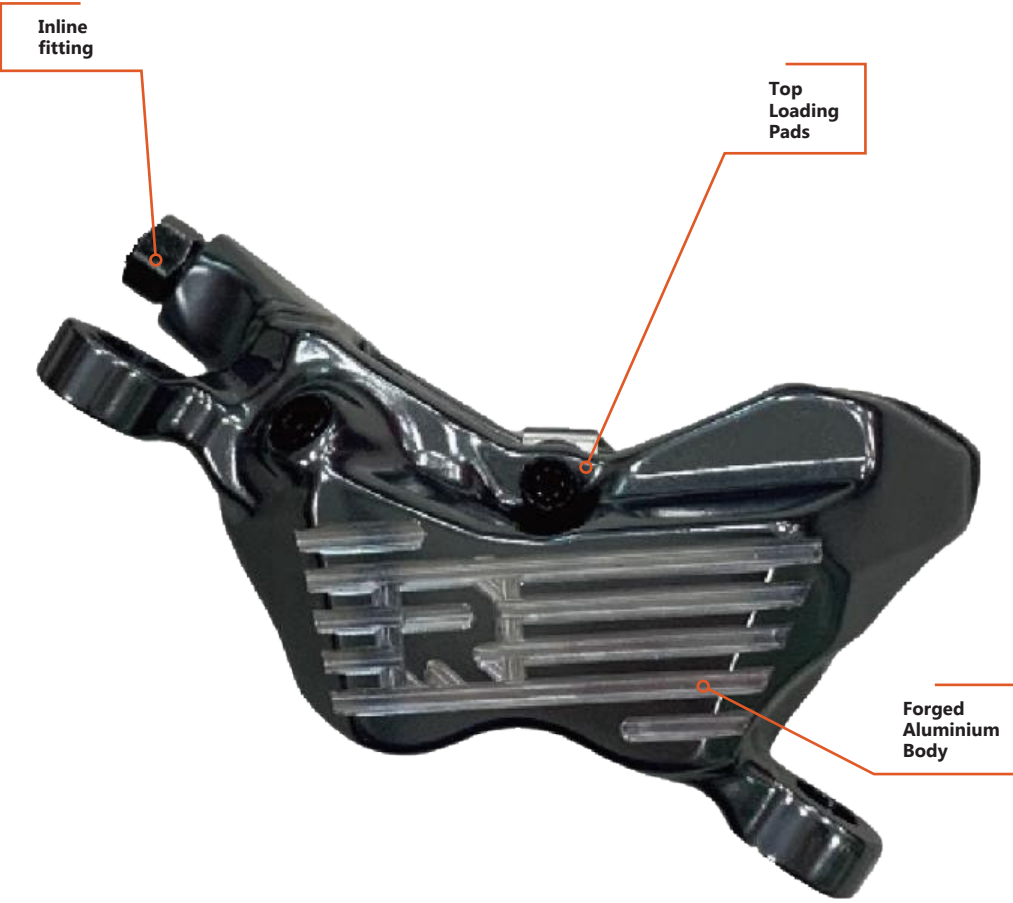
Open System

## FLUID

Mineral Oil



# EXCELLENCE CLAMPING FORCE AND PERFORMANCE DESIGN





# Attack Series

## SPECIFICATIONS

MODELS	Attack-XR	Attack-XS	Attack-XU/ Attack-XT	Attack-S	Attack-U Attack-T
MOUNT TYPE	Post Mount	Post Mount	Post Mount	Post Mount	Post Mount
LEVER MATERIAL	Forged Aluminium	Forged Aluminium	Forged Aluminium	Forged Aluminium	Forged Aluminium
LEVER BLADE	2 Finger Forged	2 Finger Forged	2 Finger Alloy Stamping	2 Finger Forged	2 Finger Alloy Stamping
ADJUSTMENT	Tool-free	Tool-free	Tooled	Tool-free	Tooled
PISTON	4	4	4	2	2
HOSE JOINT	Inline&Banjo	Inline&Banjo	Inline&Banjo	Inline	Inline
BRAKE HOSE COLOR	Black	Black	Black	Black	Black
LOADING DIRECTION	Top Loading	Top Loading	Top Loading	Top Loading	Top Loading
SYSTEM	Open System	Open System	Open System	Open System	Open System
PAD	Sinter	Sport Semi-Metallic	Semi-Metallic(4mm) Thicker pad(5mm)	Sport Semi-Metallic	Semi-Metallic(4mm) Thicker pad(5mm)
FLUID	Riderever Mineral	Riderever Mineral	Riderever Mineral	Riderever Mineral	Riderever Mineral
FINISH	Galaxy Grey	Black	Black	Black	Black
AVERAGE WEIGHT	286g	298g	290g	255g	260g

# MOUNTAIN BRAKE

## race / Attack-XR



4-Pistons caliper in excellent power and modulation. Offered in our unique galaxy gray finish.

### LEVER:

- ▶ 2 Finger Forged Lever Blade
- ▶ Forged Lever Body
- ▶ Tool-free Reach Adjust
- ▶ I-Spec B Compatible
- ▶ Finish: Galaxy Grey

### CALIPER:

- ▶ 4-Piston Forged Alloy
- ▶ Sinter Brake Pad  
(Compatible with Shimano D type)
- ▶ Finish: Galaxy Grey
- ▶ Weight: 286g

## sport / Attack-XS



Forged aluminum lever and sintered pads provide consistent performance in all conditions.

### LEVER:

- ▶ 2 Finger Forged Lever Blade
- ▶ Forged Lever Body
- ▶ Tool-free Reach Adjust
- ▶ I-Spec B Compatible
- ▶ Finish: Anodise Black



### CALIPER:

- ▶ 4-Piston Forged Alloy
- ▶ Sport Semi-Metallic (Compatible with Shimano D type)
- ▶ Finish: Anodise Black
- ▶ Weight: 298g

## MOUNTAIN BRAKE

## universal / Attack-XU / Attack-XT



4-Piston braking control at an attractive price.

### LEVER:

- ▶ 2 Finger Alloy Stamping Lever Blade
- ▶ Forged Lever body
- ▶ Tooled Reach Adjust
- ▶ I-Spec B Compatible
- ▶ Finish: Anodise Black



### CALIPER:

- ▶ 4-Piston Forged Alloy
- ▶ Semi-Metallic(4mm) Thicker pad(5mm)
- ▶ Finish: Anodise Black
- ▶ Weight: 290g

## sport / Attack-S



2piston caliper brake pads and forged aluminum lever offer improved performance.

### LEVER:

- ▶ 2 Finger Forged Lever Blade
- ▶ Forged Lever Body
- ▶ Tool-free Reach Adjust
- ▶ I-Spec B Compatible
- ▶ Finish: Anodise Black



### CALIPER:

- ▶ 2-Piston forged alloy
- ▶ Sport Semi-Metallic Disc pad (Compatible with Shimano G type)
- ▶ Finish: Anodise Black
- ▶ Weight: 255g

## MOUNTAIN BRAKE

## universal / Attack-U / Attack-T



This entry level and reliable brake is designed to fit all riders.

### LEVER:

- ▶ 2 Finger Alloy Stamping Lever Blade
- ▶ Forged Lever body
- ▶ Tooled Reach Adjust
- ▶ I-Spec B Compatible
- ▶ Finish: Anodise Black



### CALIPER:

- ▶ 2-Piston Forged Alloy
- ▶ Semi-Metallic(4mm) Thicker pad(5mm)
- ▶ Finish: Anodise Black
- ▶ Weight: 260g





# E-Bike Brake

## E-BIKE BRAKE SPECIFICATIONS

### E-Bike Series

SPECIFICATIONS

MODELS	Arc-E/Arc-TE	Attack-XE/Attack-XTE	Attack-E/Attack-TE
MOUNT TYPE	Post Mount	Post Mount	Post Mount
LEVER MATERIAL	Forged Aluminium	Forged Aluminium (Ball End)	Forged Aluminium (Ball End)
LEVER BLADE	2 Finger Forged	2 & 4 Finger Forged	2 & 4 Finger Forged
SENSOR CONTROL	W/	W/	W/
ADJUSTMENT	Tooled	Tooled	Tooled
PISTON	2	4	2
PISTON DI.	24 mm	16/16 mm	24 mm
HOSE JOINT	Inline	Inline & Banjo bolt	Inline
BRAKE HOSE COLOR	Black	Black	Black
LOADING DIRECTION	Top Loading	Top Loading	Top Loading
SYSTEM	Open System	Open System	Open System
PAD	E-BIKE PAD(4mm) Thicker pad(5mm)	E-BIKE PAD (4mm) Thicker pad(5mm)	E-BIKE PAD(4mm) Thicker pad(5mm)
FLUID	Riderever Mineral	Riderever Mineral	Riderever Mineral
FINISH	Black	Black	Black
AVERAGE WEIGHT	228g	298g	257g

# Arc-E/Arc-TE

**SYSTEM**  
Open System

**FLUID**  
Mineral Oil



Enjoy the sense of speed along with a sense of security.

**LEVER:**

- ▶ 2 Finger Forged Blade (Ball end)
- ▶ Forged Lever body
- ▶ Tooled Reach Adjust
- ▶ I-Spec II Compatible
- ▶ Standard Wire Length: 200 & 500mm
- ▶ Reed Sensor (Power off ) Available
- ▶ Finish: Anodise Black



**CALIPER:**

- ▶ 2-Piston Forged Alloy
- ▶ E-BIKE PAD(4mm)  
Thicker pad (5mm)
- ▶ Top Loading
- ▶ Inline Fitting
- ▶ Finish: Anodise Black
- ▶ Weight: 228g

# Attack-XE/Attack-XTE

**SYSTEM**  
Open System

**FLUID**  
Mineral Oil



High braking performance also available for E-bike.

**LEVER:**

- ▶ 2 & 4 Finger Forged Lever Blade(Ball End)
- ▶ Forged Lever body
- ▶ Tooled Reach Adjust
- ▶ I-Spec B Compatible
- ▶ Reed Sensor
- ▶ Standard Wire Length: 200 & 500mm
- ▶ Finish: Anodise Black



**CALIPER:**

- ▶ 4-Piston Forged Alloy
- ▶ E-BIKE PAD(4mm)  
Thicker pad (5mm)  
(Compatible with Shimano D type)
- ▶ Top Loading
- ▶ Inline & Banjo
- ▶ Finish: Anodise Black
- ▶ Weight: 298g

# Attack-E/Attack-TE

**SYSTEM**  
Open System

**FLUID**  
Mineral Oil



Attack version with  
Sensor Control Design.

**LEVER:**

- ▶ 2 & 4 Finger Forged Lever Blade(Ball End)
- ▶ Forged Lever body
- ▶ Tooled Reach Adjust
- ▶ I-Spec B Compatible
- ▶ Reed Sensor
- ▶ Standard Wire Length: 200 & 500mm
- ▶ Finish: Anodise Black



**CALIPER:**

- ▶ 2-Piston Forged Alloy
- ▶ E-BIKE PAD(4mm)  
Thicker pad(5mm)
- ▶ Top Loading
- ▶ Inline Fitting
- ▶ Finish: Anodise Black
- ▶ Weight: 257g



# Cargo Bike Brake





# Cargo Bike Brake

## SPECIFICATIONS

MODELS	Cargo/Cargo-E/ Cargo-T/Cargo-TE	Cargo-X/Cargo-XE Cargo-XT/Cargo-XTE	Cargo-Duo/Cargo-DE Cargo-DT/Cargo-DTE Cargo-DX/Cargo-DXE Cargo-DXT/Cargo-DXTE
MOUNT TYPE	Post Mount	Post Mount	Post Mount
LEVER MATERIAL	Forged Aluminum(Ball end)	Forged Aluminum(Ball end)	Forged Aluminum(Ball end)
LEVER BLADE	4 Finger Forged	4 Finger Forged	4 Finger Forged
SENSOR CONTROL	Option	Option	Option
ADJUSTMENT	Tooled	Tooled	Tooled
PISTON	2	4	2 & 4
CALIPER	For 1.8mm Rotor(Standard) For 2.0-2.3mm Rotor(Thicker version)	For 1.8mm Rotor(Standard) For 2.0-2.3mm Rotor(Thicker version)	For 1.8mm Rotor(standard) For 2.0-2.3mm Rotor(Thicker version)
HOSE JOINT	Inline Bolt	Inline & Banjo Bolt	Inline & Banjo Bolt
BRAKE HOSE COLOR	Black	Black	Black
LOADING DIRECTION	Top Loading	Top Loading	Top Loading
SYSTEM	Open System	Open System	Open System
PAD	Semi-Metallic(4mm) Thicker pad(5mm)	Semi-Metallic(4mm) Thicker pad(5mm)	Semi-Metallic(4mm) Thicker pad(5mm)
FLUID	Riderever Mineral	Riderever Mineral	Riderever Mineral
FINISH	Black	Black	Black

# CARGO BIKE BRAKE

## Cargo/Cargo-E Cargo-T/Cargo-TE

### SYSTEM

Open System

### FLUID

Mineral Oil



Powerful choice for limited mounting space.

### LEVER:

- 4 Finger Forged Lever Blade(Ball End)
- Forged Lever body
- Toolled Reach Adjust
- Lock Device (option)
- Finish: Anodise Black

### Cargo-E/Cargo-TE:

- Reed Sensor w wire (option)
- Standard Wire Length: 200 & 500mm



### CALIPER:

- 2-Piston Forged Caliper (For Standard -T1.8mm rotor Thicker-T2.0-2.3mm rotor)
- Semi-Metallic(4mm) Thicker pad(5mm)
- Top Loading
- Inline Bolt
- Finish: Anodise Black

# Cargo-X/Cargo-XE Cargo-XT/Cargo-XTE

## SYSTEM

Open System

## FLUID

Mineral Oil



Powerful, stable brake performance for heavy loading bikes.

## LEVER:

- ▶ 4 Finger Forged Lever Blade(Ball End)
- ▶ Forged Lever body
- ▶ Tooled Reach Adjust
- ▶ Finish: Anodise Black

## Cargo-XE/Cargo-XTE:

- ▶ Reed Sensor w wire (option)
- ▶ Standard Wire Length: 200 & 500mm

## CALIPER:

- ▶ 4-Piston Forged Caliper  
(For Standard -T1.8mm rotor  
Thicker-T2.0-2.3mm rotor)
- ▶ Semi-Metallic(4mm)  
Thicker pad(5mm)
- ▶ Top Loading
- ▶ Inline or Banjo
- ▶ Finish: Anodise Black



## E-BIKE BRAKE

# Cargo-D/Cargo-DE Cargo-DT/Cargo-DTE

## SYSTEM

Open System

## FLUID

Mineral Oil



For tricycles, duo calipers with excellent braking force.

## LEVER:

- ▶ 4 Finger Forged Lever Blade (Ball End)
- ▶ Forged Lever Body
- ▶ Tooled Reach Adjust
- ▶ Lock Device (option)
- ▶ Finish:Anodise Black

## Cargo-De/Cargo-DTE:

- ▶ Reed Sensor w wire (option)
- ▶ Standard Wire Length: 200 & 500mm

## CALIPER:

- ▶ 2-Piston Forged Standard & Mirrored  
Caliper (For Standard -T1.8mm rotor  
Thicker-T2.0-2.3mm rotor)
- ▶ Semi-Metallic(4mm)  
Thicker pad(5mm)
- ▶ Top Loading
- ▶ Inline Bolt
- ▶ Finish: Anodise Black





# Cargo-DX/Cargo-DXE/ Cargo-DXT/Cargo-DXTE

**SYSTEM**  
Open System

**FLUID**  
Mineral Oil



For tricycles, duo  
calipers with excellent  
braking force.

**LEVER:**

- ▶ 4 Finger Forged Lever Blade (Ball End)
- ▶ Forged Lever Body
- ▶ Tooled Reach Adjust
- ▶ Lock Device (option)
- ▶ Finish: Anodise Black

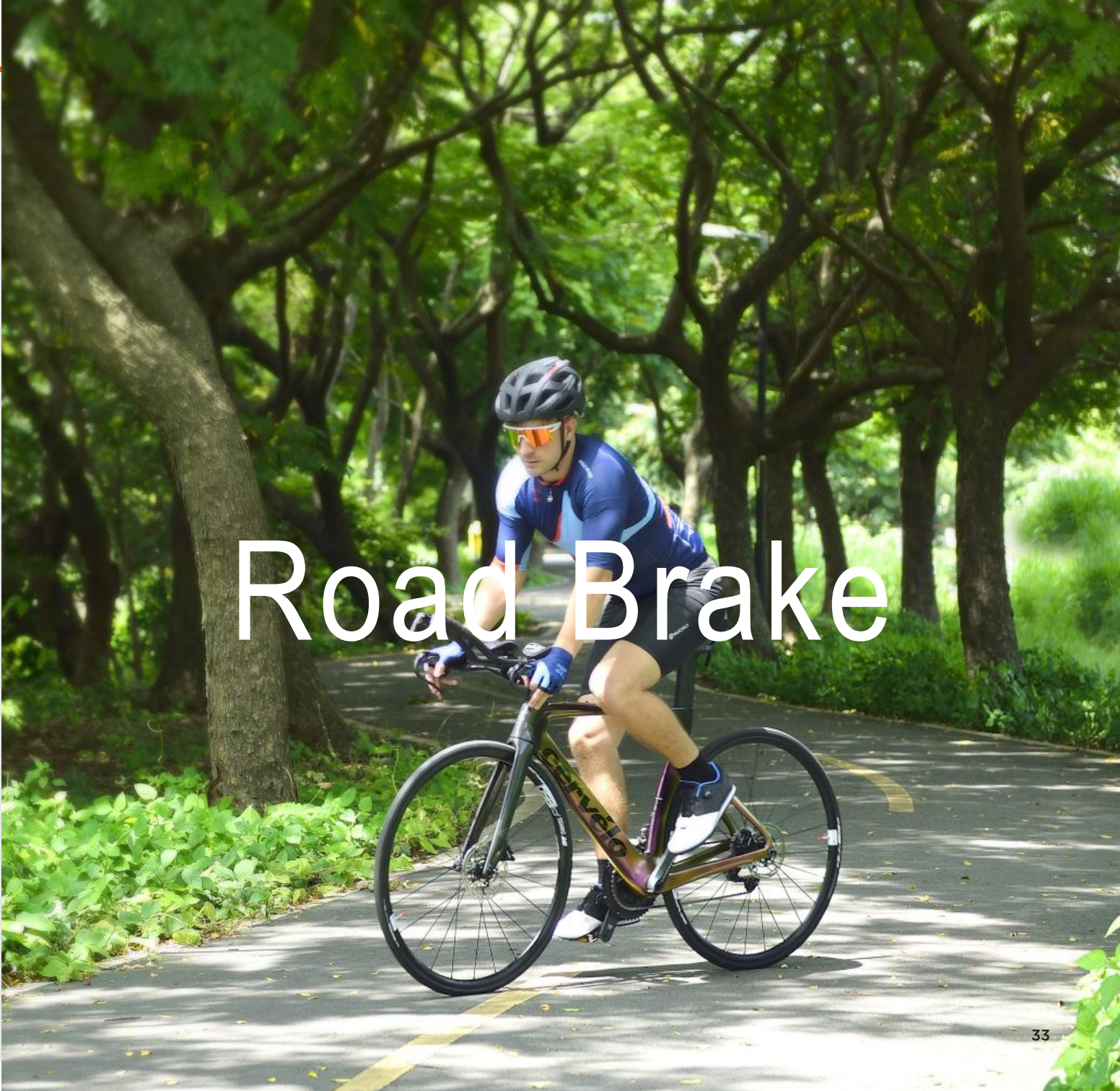
**Cargo-DXE/Cargo-DXTE:**

- ▶ Reed Sensor w wire (option)
- ▶ Standard Wire Length: 200 & 500mm

**CALIPER:**

- ▶ 4-Piston Forged Standard & Mirrored Caliper For Standard -T1.8mm rotor Thicker-T2.0~2.3mm rotor
- ▶ Semi-Metallic(4mm) Thicker pad(5mm)
- ▶ Top Loading
- ▶ Inline or Banjo
- ▶ Finish: Anodise Black

Road Brake





# Attack / Arc (FM) / Triva

SPECIFICATIONS

MODELS	Attack-S (FM)	Attack-U (FM)	Arc-U (FM)
MOUNT TYPE	Flat Mount	Flat Mount	Flat Mount
LEVER MATERIAL	Forged Aluminium	Forged Aluminium	Forged Aluminium
LEVER BLADE	2 Finger Forged	2 Finger Alloy Stamping	2 Finger Alloy Stamping
ADJUSTMENT	Tool-free	Tooled	Tooled
PISTON	2	2	2
HOSE JOINT	Inline	Inline	Inline
BRAKE HOSE COLOR	Black	Black	Black
LOADING DIRECTION	Top Loading	Top Loading	Top Loading
SYSTEM	Open System	Open System	Open System
PAD	Sport-Semi-Metallic	Semi-Metallic	Semi-Metallic
FLUID	Riderever Mineral	Riderever Mineral	Riderever Mineral
FINISH	Black	Black	Black
AVERAGE WEIGHT	261g	265g	265g

MODELS	Triva	Triva II
MOUNT TYPE	Flat Mount	Flat Mount
LEVER MATERIAL	Forged Aluminium	Forged Aluminium
ADJUSTMENT	Tooled	Tooled
PISTON	2	2
Di2 Remote Assembly	Option	Option
HOSE JOINT	Inline	Inline
BRAKE HOSE COLOR	Black	Black
LOADING DIRECTION	Top Loading	Top Loading
SYSTEM	Open System	Open System
PAD	Semi-Metallic Brake Pad	Semi-Metallic Brake Pad
FLUID	Riderever Mineral	Riderever Mineral
FINISH	Black	Black
AVERAGE WEIGHT	279g	249g

# sport / Attack-S (FM)



Our Attack-S brake is now also available as a flatmount version to fit modern road frames.

LEVER:

- 2 Finger Forged Lever Blade
- Forged Lever body
- Tool-free Reach Adjust
- I-Spec B Compatible
- Finish: Anodise Black



CALIPER:

- 2-Piston Forged Alloy
- Sport Semi-Metallic Brake Pad or Elite Cooling Pad (Compatible with Shimano K type)
- Finish: Anodise Black
- Weight: 261g

# universal / Attack-U (FM)



Our Attack-U brake is now also available as a flatmount version to fit modern road frames.

### LEVER:

- ▶ 2 Finger Alloy Stamping Lever Blade
- ▶ Forged Lever body
- ▶ Tooled Reach Adjust
- ▶ Finish: Anodise Black



### CALIPER:

- ▶ 2-Piston Forged Alloy
- ▶ Semi-Metallic Brake Pad (Compatible with Shimano K type)
- ▶ Finish: Anodise Black
- ▶ Weight: 265g

# universal / Arc-U (FM)



Our Arc-U brake is now also available as a flatmount version to fit modern road frames.

### LEVER:

- ▶ 2 Finger Alloy Stamping Lever Blade
- ▶ Forged Lever body
- ▶ Tooled Reach Adjust
- ▶ Finish: Anodise Black



### CALIPER:

- ▶ 2-Piston Forged Alloy
- ▶ Semi-Metallic Brake Pad (Compatible with Shimano K type)
- ▶ Finish: Anodise Black
- ▶ Weight: 265g

# Race/Triva/Triva II



Aero dynamic, comfort levers. Allows easy Di2&Sram upgrade by adding switch port accessory.

LEVER:

- Forged Lever Blade(Option: Carbon)
- Forged Lever Body
- Flexible Mounting ID (19-20.5mm)
- Di2 (SW-R9150 & SW-RS801) SRAM eTaps switch port(option)
- Tooled Reach Adjust
- Finish: Anodise Black

Triva II



CALIPER:

- 2-Piston Forged Alloy
- Flat Mount
- Semi-Metallic Brake Pad (option: Elite cooling pad) (Compatible with Shimano K type)
- Finish: Anodise Black
- Weight: Triva 279g(Carbon lever)-289g Triva II 249(Carbon lever)-259g

# MCX-2

Dual-piston design offers precise power and modulation. Available for post mount and flat mount bikes, they are highly adjustable for easy setup.

MODELS	MCX-2 (FM)	MCX-2 (PM)
MOUNT TYPE	Flat Mount	Post Mount
CALIPER	Melt Forged	Melt Forged
PISTON	2	2
COLOR	Black	Black
CALIPER FIXING BOLT	T25	T25
PAD	Semi-metallic disc pad	Semi-metallic disc pad
AVERAGE WEIGHT	160	170
Options		
CABLE	JAGWIRE PCK200-PCK209	JAGWIRE PCK400-PCK409



MCX-2 (FM)

- Melt-Forged
- Flat Mount
- Dual Piston
- 2-Piece Actuator Arm
- Spring Loading Adjustment
- Pad Adjustment
- Semi-metallic or Elite-cooling disc pad (Compatible with Shimano K type)
- Includes Inline Adjuster
- Weight: 160 g

MCX-2 (PM)

- Melt-Forged
- Post Mount
- Dual Piston
- 2-Piece Actuator Arm
- Spring Loading Adjustment
- Pad Adjustment
- Semi-metallic disc pad (Compatible with ShimanoG type)
- Includes Inline Adjuster
- Weight: 170 g







# Accessories

## Brake Rotors

### Pro Disc Brake Rotors

#### RS05A



Hub/Brake Compatibility : 6-Bolt Disc		
Rotor Size	Weight	Rotor Thickness
140mm	109 g	1.8 mm
160mm	125 g	1.8 mm
180mm	151 g	1.8 mm
203mm	175 g	1.8 mm
220mm	208 g	2.0 mm

#### RS05B



Hub/Brake Compatibility : Centerlock Disc		
Rotor Size	Weight	Rotor Thickness
140mm	122 g	1.8 mm
160mm	137 g	1.8 mm
180mm	163 g	1.8 mm
203mm	187 g	1.8 mm
220mm	230 g	2.0 mm

### Pro Disc Brake Rotors with Magnet

#### RS05A-E



Hub/Brake Compatibility : 6-Bolt Disc		
Rotor Size	Weight	Rotor Thickness
160mm	119 g	1.8 mm
180mm	154 g	1.8 mm
203mm	179 g	1.8 mm
220mm	208 g	2.0 mm

#### RS05B-E



Hub/Brake Compatibility : Centerlock Disc		
Rotor Size	Weight	Rotor Thickness
160mm	132 g	1.8 mm
180mm	167 g	1.8 mm
203mm	192 g	1.8 mm
220mm	222 g	2.0 mm

# Brake Rotors

## Sport Disc Brake Rotors

### RS04A



Hub/Brake Compatibility : 6-Bolt Disc		
Rotor Size	Weight	Rotor Thickness
140mm	109 g	1.8 mm
160mm	127 g	1.8 mm
180mm	151 g / 190 g	1.8 & 2.3 mm
203mm	192 g / 239 g	1.8 & 2.3 mm
220mm	226 g / 227 g	2.0 & 2.3 mm

### RS04B



Hub/Brake Compatibility : Centerlock Disc		
Rotor Size	Weight	Rotor Thickness
140mm	131 g	1.8 mm
160mm	148 g	1.8 mm
180mm	172 g	1.8 mm
203mm	213 g	1.8 mm
220mm	246 g	2.0 mm

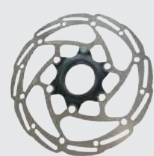
## Basics Disc Brake Rotors

### BR01A



Hub/Brake Compatibility : 6-Bolt Disc		
Rotor Size	Weight	Rotor Thickness
160mm	125 g	1.8 mm
180mm	154 g	1.8 mm

### BR01B



Hub/Brake Compatibility : Centerlock Disc		
Rotor Size	Weight	Rotor Thickness
160mm	160 g	1.8 mm
180mm	188 g	1.8 mm

## Brake Rotor Accessories

### CCR081AB



- Specification:
- ▶ Color: Black
  - ▶ Centerlock Rotor Lockring Inner Type
  - ▶ Compatibility: 9mm - 12mm Axles
  - ▶ Material: Alloy

### CCR082AB



- Specification:
- ▶ Color: Black
  - ▶ Centerlock Rotor Lockring Outer Type
  - ▶ Compatibility: 15mm - 20mm Axles
  - ▶ Material: Alloy

### CCR089AB



- Specification:
- ▶ Color: Black
  - ▶ 6 bolt to centerlock rotor adapter
  - ▶ Material: Alloy

# Adapters



IS-3 IS-4 IS-6 IS-7 IS-8

IS - PM		
Fork Frame	Rotor Size	
	F	R
140	IS-8	IS-6
160	IS-6	IS-7
180	IS-7	IS-4
203	IS-4	IS-3

Note: "IS" Adapter set including Adapter \* 1 + AM-2220-000 ( M6 \* 19L ) 4 screws



PM-1 PM-3 PM-4 PM-6 PM-7

Adapter	Accessories	Usage
PM-1 PM-4 PM-7	AM-2220-001 (M6*27L) Bolt	1
	AM-2220-002 (M6*32L) Bolt	1
	CCC001ABB Washer	2
PM-3 PM-6	AM-2220-000 M6*19L	4

PM - PM						
<div>Rotor Size</div> <div>Fork Frame</div>		ø140	ø160	ø180	ø203	ø220
4” 140	Front Fork	DM	PM-1 (AF-1006)	-	-	-
	Rear Fork	DM	PM-1 (AF-1006)	-	-	-
6” 160	Front Fork	-	DM	PM-1 (AF-1006)	PM-3 (AF-1007)	-
	Rear Fork	-	DM	PM-1 (AF-1006)	PM-3 (AF-1007)	-
8” 180	Front Fork	-	-	DM	PM-4 (AF-1017)	PM-6 (AF-1018)
	Rear Fork	-	-	DM	PM-4 (AF-1017)	PM-6 (AF-1018)
10” 203	Front Fork	-	-	-	DM	PM-7 (AF-1019)
	Rear Fork	-	-	-	DM	PM-7 (AF-1019)

# Adapters



FF-1      FF-2

FM - FM			
Fork Frame		Rotor Size	
		ø140	ø160
4"	Front Fork	FF-1	FF-1
	Rear Fork	DM	FF-2
140			

FM - PM			
Fork Frame		Rotor Size	
		ø140	ø160
4"	Front Fork	FP 1	FP 1-1
	Rear Fork	FP 2	FP 2-1
140			

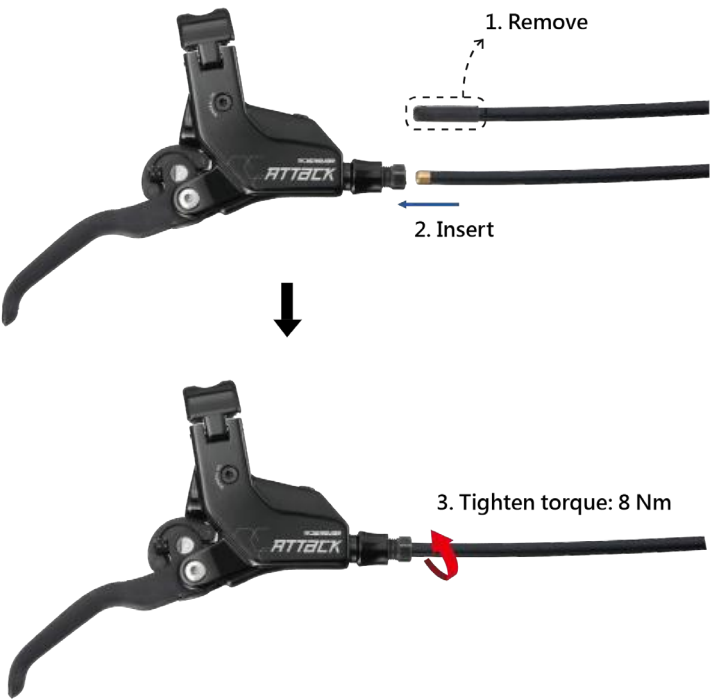


FP1    FP2    FP1-1    FP2-1

Adapter Model	Spec	Accessories	Usage	Note
FF-1	F140/F160	CM-2220-002 (M5*13L) Bolt	2	For caliper
		AM-2001 (M5*14.7L) Bolt	2	For Front Fork
FF-2	R160	CM-2220-002 (M5*13L) Bolt	2	For caliper
FP1 / FP1-1	F140	AM-2220-002 (M6*18L) Bolt	2	For caliper
		C1400001 (M5*14L) Bolt	2	For Front Fork
FP2/FP2-1	R140 / R160	AM-2220-002 (M6*18L) Bolt	2	For caliper
FF-2/FP2/FP2-1		AM-2005 (M5*21.8L) Bolt	2	For Frame (15mm)
		AM-2002 (M5*27.8L) Bolt		For Frame (20mm)
		AM-2003 (M5*32.8L) Bolt		For Frame (25mm)
		AM-2004 (M5*37.8L) Bolt		For Frame (30mm)

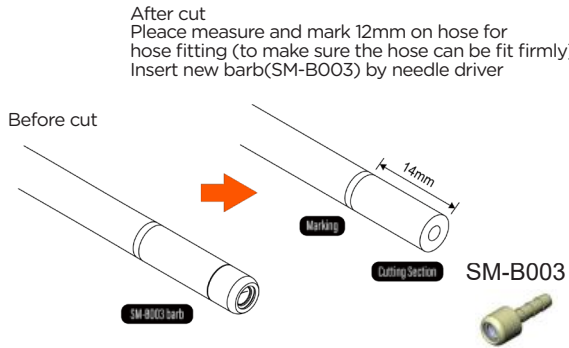
## HOSE Cutting Adjustment

### SEZ For Internal Routing & Accessories After Hose Cut



#### SEZ Hose Fitting

- Apply to lever side
- Small plug, easy internal wiring
- 3 Step easy assembly



#### Accessories for hose fitting (after hose cutting)

Hose Type	Barb	Bushing	Compression nut
SEZ	SM-B003	CC777	CM-2006-M
Standard	CF-6001	CC777	CM-2006-M

- \*CCC777 = Jagwire #HFA505
- \*CF-6001 is compatiabe with Jagwire #HFA309 barb
- \*CM-2006-M is compatiabe with Jagwire #HFA403
- \*SM-B003 is disposable barb, once used, must be replaced

#### Standard Hose Fitting Parts After Hose Cut







## Manufacturing Excellence

Riderever as an ISO 9001/TS-16949 company we have an unyielding commitment to quality. Fully committed to process improvement, our experienced engineering staff always looking for ways to enhance quality, reduce errors and increase customer satisfaction. By applying Toyota Production System (TPS), everyone in the company continued to improve the everyday work. Our Balanced blend of automation and manual processes helps us manage flow and volume, resulting in unsurpassed quality and efficiency.

## Environment & Community

Recognizing our vital role as responsible global citizens, we strive to produce products that meet the exacting requirements of government agencies for performance, safety and environmental impact. Our primary control system products are CPSIA, Proposition 65 and CEN certified.

## Warranty Policy

**EXTENT OF LIMITED WARRANTY**  
Riderever warrants its products to be free from defects in materials or workmanship for a period of two years after original purchase. This warranty only applies to the original owner and is not transferable. Claims under this warranty must be made through the retailer where the bicycles or RIDEREVER product was purchased. Original proof of purchase is required. Complete product warranty information is available by product manual. Or a copy may be requested via e-mail.

## GLOBAL OFFICE

### RIDEREVER HEAD OFFICE

(OEM/Aftermarket Sales & Manufacturing)  
No. 55, Alley 121, Lane 175, Kousheng Rd.  
Changhua City, Taiwan  
Ph: +886.4.7323090  
Fx: +886.4.732.1824  
RService@riderever.com.tw

## RIDEREVER EUROPE

(OEM)  
Klein Frankrijkstraat 24, 9600 Ronse, Belgium  
Ph: +32.55.30.41.65  
Fx: +32.55.30.42.65  
service@rever-europe.com

## RIDEREVER CHINA

(OEM)  
1456 Honghu Rd,  
Kunshan Economic& Technical Development Zone,  
Jiangsu Province, China  
Ph: +86.512.5016.5059  
Fx: +86.512.5016.5060

**RIDEREVER**

[www.riderever.com](http://www.riderever.com)